



## optiPoint 500 system telephones The new telephone family for HiPath/Hicom systems

The design of the optiPoint 500 telephones permits simple and rapid access to the desired HiPath™/Hicom® features.

The operating principle is characterized by three dialog keys which, in conjunction with the display, provides an interactive user prompting system.

The illuminated key concept is used to display activated functions.

**SIEMENS**

Global network of innovation

The numerous control functions are divided into logically arranged submenus and can be viewed on the display. Features can also be selected directly by means of a code via the service key.

Important functions can individually assigned to a feature key.

The following telephones are available:

- optiPoint 500 entry,
- optiPoint 500 economy,
- optiPoint 500 basic,
- optiPoint 500 standard,
- optiPoint 500 advance.

optiPoint 500 extended scripts enable the use of Chinese characters for user prompts on the display.

A PC can be connected via the integrated USB 1.1 interface.

CallBridge for Data turns your PC into a data communication interface. The CallBridge TU TAPI service provider allows you to set up telephone connections and run telephone applications on the PC.

An innovative adapter concept for telephones allows users to respond rapidly to specific workstation requirements. Additional devices (for example, fax devices, telephones, headsets) can be directly connected to the telephones by simply attaching or removing various adapters on the underside of the telephone.

## Telephones

### optiPoint 500 entry

- 8 feature keys with LEDs
- Open listening
- 2 keys (plus, minus) for settings ringer volume, ringer pitch and alerting tone
- Suitable for wall-mounting
- Colors: arctic, manganese

### optiPoint 500 economy

- 12 feature keys with LEDs
- Open listening
- Alphanumeric LCD tiltable display with 2 lines (24 characters per line)
- 3 dialog keys for easy menu navigation and selection: Yes, Back and Next keys
- 2 keys (plus, minus) for setting ringer volume, ringer pitch, alerting tone and display contrast
- Suitable for wall-mounting
- Colors: arctic, manganese





## optiPoint 500 basic

- 12 feature keys with LEDs
- Open listening
- Integrated USB 1.1 interface
- 1 adapter port
- 1 interface for max. 2 key modules:
  - optiPoint application module
  - optiPoint key module
  - optiPoint signature module
- Alphanumeric LCD tiltable display with 2 lines (24 characters per line)
- 3 dialog keys for easy menu navigation and selection: Yes, Back and Next keys
- 2 keys (plus, minus) for setting ringer volume, ringer pitch, alerting tone and display contrast
- Suitable for wall-mounting
- Colors: arctic, manganese

## optiPoint 500 standard

- 12 feature keys with LEDs
- Full duplex handsfree talking with echo suppression to suit ambient conditions
- integrated USB 1.1 interface
- 1 adapter port
- 1 interface for max. 2 key modules:
  - optiPoint application module
  - optiPoint key module
  - optiPoint signature module
- Alphanumeric LCD tiltable display with 2 lines (24 characters per line)
- 3 dialog keys for easy menu navigation and selection: Yes, Back and Next key
- 2 keys (plus, minus) for setting ringer volume, ringer pitch, handsfree talking quality, alerting tone and display contrast
- Suitable for wall-mounting
- Colors: arctic, manganese

## optiPoint 500 advance

- 19 feature keys with LEDs
- Full duplex handsfree talking with echo suppression to suit ambient conditions
- Integrated USB 1.1 interface
- 2 adapter ports
- 1 headset port (121 TR9-5)
- 1 interface for max. 2 key modules:
  - optiPoint application module
  - optiPoint key module
  - optiPoint signature module
- Alphanumeric LCD tiltable display with 2 lines (24 characters per line); additional backlighting that remains illuminated for approx. 5 s.
- 3 dialog keys for easy menu navigation and selection: Yes, Back and Next keys
- 2 keys (plus, minus) for setting ringer volume, ringer pitch, handsfree talking quality, alerting tone and display contrast
- Suitable for wall-mounting
- Colors: arctic, manganese



## Key modules

### optiPoint application module

Key module for optiPoint 500 basic, optiPoint 500 standard and optiPoint 500 advance.

Add-on device with color display and integrated alphanumeric keyboard for basic, standard and advance models.

- Backlit graphic tiltable touchscreen with color display (320\*240 pixels),
- 2 keyboard versions
  - QWERTZ (German)
  - QWERTY (English)
- 7 interface languages for local applications
- Import/export of telephone directory entries to/from PC
- ENB, (Electronic Notebook)  
The Electronic Notebook can store up to 1,000 entries. Address data (e.g. Contacts from MS Outlook) can be downloaded from a PC as a CSV file. Menu guidance is provided for address updates.
- Display Tool  
The Display Tool allows the user to adjust the contrast and illumination of the display to the ambient operating conditions, to calibrate the touchscreen and to configure the Screensaver (time and password).

Colors: arctic, manganese



### optiPoint key module

Key module for optiPoint 500 basic, optiPoint 500 standard and optiPoint 500 advance.

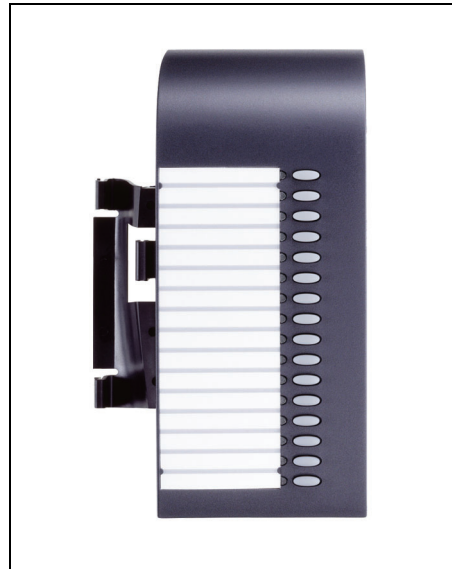
This device allows you to program additional features and to store numbers.

- 16 feature keys that can be assigned any features and/or numbers (for repertory dialing). You can program up to 30 destinations with the Shift key. LEDs for optically signaling the activated functions and keys.
- Max.
- 2 key modules can be connected.

#### Technical data

Dimensions (H × W × D) in mm  
65 × 124 × 213

Colors: arctic, manganese



### optiPoint signature module (for HiPath 4000 only)

Chip card reader as a key module for optiPoint 500 basic, optiPoint 500 standard and optiPoint 500 advance.

The key module is a simple way of upgrading an existing telephone to chip card mode.

Colors: arctic, manganese



### optiPoint BLF

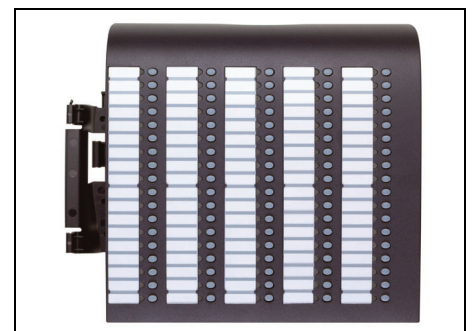
The device is similar in structure to the key module, but contains 90 LEDs and feature keys. It is designed for attendant consoles of the following systems:

- Hicom 150 E/150 H Office
- HiPath AllServe 150
- HiPath 3000

#### Technical data

Dimensions (H × W × D) in mm  
65 × 245 × 213

Colors: arctic, manganese



## Adapters

The innovative adapter concept provides flexibility in expanding telephone workstations at the optiPoint 500 basic, optiPoint 500 standard and optiPoint 500 advance system telephones by allowing individual add-on components to be plugged in or out.

**optiPoint acoustic adapter.** This adapter allows the following telephone accessories to be connected:

- active loudspeaker and desk microphone connected via a Y cable, optiPoint Conference Kit (without Y cable)
- corded headset (121 TR9-5) or cordless headset (121 TR 9-5\*) with call acceptance/end call function from a handset,
- busy display/door opener and
- secondary bell/visual paging with independent power supply via a floating contact.

**optiPoint analog adapter.** This adapter is used for connecting an analog terminal to the system telephone, for example, a telephone, G3 fax device, modem or cordless telephone. An additional power supply unit is required.

**optiPoint ISDN adapter.** This adapter allows you to connect standard ISDN  $S_0$  terminals with an independent power supply, for example a PC with an  $S_0$  card.

**optiPoint phone adapter.** This adapter allows you to connect a second  $U_{P0/E}$  terminal with an independent power supply (client) for using the second B channel.

**optiPoint recorder adapter.** This adapter is used for connecting an external recorder or a second headset. The user must be informed that the call is being recorded.

### Technical data

Dimensions (H × W × D) in mm

29 × 60 × 143



## Accessories

### Wall bracket

Can be attached to all optiPoint 500 telephones, but not

- those with add-on devices
- those with USB 1.1 interface
- if the adapter is plugged in.

### Line cords

No line cords are supplied for connecting the optiPoint 500 telephones. The following cords are available:

- Mini-Western MW6/MW6
- MW/VDo4
- MW 6/MW 8

### Accessory cables

- USB 1.1 cable with a USB client elbow plug for PC connection (required for CallBridge TU and CallBridge for Data)
- Y cable for the "active loudspeaker" and desk microphone

### optiPoint conference kit

This modular/expandable solution is specially designed for conference rooms.

Up to 8 conference microphones and 2 conference loudspeakers can be connected to an acoustic adapter via optiPoint 500 telephones.

- Improved handsfree quality for telephone conferences
- Optional: tie-clip microphone
- Separate amplifier/control electronics per conference microphone (adjustable sensitivity)
- Controllable mute function for all connected conference microphones
- Flexible installation in the conference room (changeable)
- Interface for using a radio microphone

## Headsets

The headset replaces the telephone handset. This means that the user's hands are free when he or she is using the telephone. This supplementary equipment is particularly useful for frequent telephone users (operators, telesales personnel).

Several headsets are available for use with the telephones described in this data sheet. For more information on headsets and partner companies, go to:  
[www.siemens.com/hipath](http://www.siemens.com/hipath).

## Active loudspeaker

The additional "active loudspeaker" supplements the loudspeaker integrated in the telephone, improves the acoustic quality and is best suited for teleconferences. This loudspeaker is also a popular accessory for individual offices of senior staff. A LED signals that the loudspeaker is operational after it has been connected to the power supply. The loudspeaker is activated using the loudspeaker key on the telephone. The volume controller on the front side is used to adjust the basic volume to the given room conditions. The loudspeaker key is used to control the volume during a call.

### Technical data

Dimensions (H × W × D) in mm  
160 × 100 × 95

Colors: arctic, manganese



## Desk microphone

The desk microphone replaces the microphone integrated in the telephone and allows the "Handsfree-talking" feature to be used to its optimum capacity if the acoustic quality is poor. This microphone also gives users a greater freedom of movement when using the telephone. An illuminated LED indicates that the microphone is activated after the microphone has been switched on using the loudspeaker key on the telephone. The microphone can be deactivated by manually pressing the mute key. The cancellation of the LED indicates that the microphone has been disconnected.

### Technical data

Dimensions (H × W × D) in mm  
25 × 68 × 77

Colors: arctic, manganese



## Online key labeling tool

This tool is used for the straightforward, convenient and neat labeling of keys on optiPoint 500 telephones when these telephones are put into service for the first time by the Siemens Service department or by company-specific system administrators. Label sheets for all telephones can be ordered in packets of fifty (contents: 10 sheets for optiPoint entry, 40 sheets for optiPoint basic/standard/advance). This tool is available on a worldwide basis via the Internet.

## Second headset

A second headset can be connected at the optiPoint recorder adapter.

## Technical data

optiPoint 500 telephones	entry	economy	basic	standard	advance
Feature keys with LED	8	12	12	12	19
12-key dialing keypad	•	•	•	•	•
2 keys (plus, minus)	•	•	•	•	•
Open listening	•	•	•	•	•
Full duplex handsfree talking				•	•
Adapter port			1	1	2
USB 1.1 interface			•	•	•
Headset port (121 TR9-5)					•
3 dialog keys		•	•	•	•
Display (characters)		2 x 24	2 x 24	2 x 24	2 x 24
Background lighting for display					•
Interface for max. 2 key modules 1 application module a further selected optiPoint module or 2 key modules or 1 key module and 1 signature module			• • •	• • •	• • •
Wall mounting	•	•	•	•	•
Dimensions in mm					
Width	159	214	214	214	214
Depth	220	220	220	220	220
Height	64	68	68	68	68

The optiPoint 500 telephones can be connected to the following systems:

- HiPath 500
- Hicom 150 E / 150 H Office
- HiPath AllServe
- HiPath 1220
- HiPath 3000 (optiPoint application module only possible with V5.0/V6.0)
- Hicom 300 E/300 H
- HiPath 4000 (optiPoint application module only possible with V2.0/V3.0)

## Telephones with the company logo

All optiPoint 500 telephones are also available without the Siemens logo. Company-specific logos can thus be subsequently applied.

# Our strengths - Your advantages

Siemens Enterprise Communications is known worldwide as a trailblazer in the advancement of information and communication technologies. No other company offers such a comprehensive and innovative portfolio.

Regardless of which communication technology you are using today – or want to use tomorrow – Siemens Enterprise Communications offers you the right solution.

[www.siemens.com/enterprise](http://www.siemens.com/enterprise)

Copyright © Siemens Enterprise  
Communications GmbH & Co. KG 11/2006  
Hofmannstr. 51 • D-81359 Munich

**Reference No.: A31002-H8400-A100-9-7629**

The information provided in this document contains merely general descriptions or characteristics of performance which in case of actual use do not always apply as described or which may change as a result of further development of the products. An obligation to provide the respective characteristics shall only exist if expressly agreed in the terms of contract. Availability and technical specifications are subject to change without notice. The trademarks used are owned by Siemens Enterprise Communications GmbH & Co. KG or their respective owners.